

Luminous Transmittance Meter TLV-304-LC

Quick check of transmittance with a value close to sensitivity of human eyes



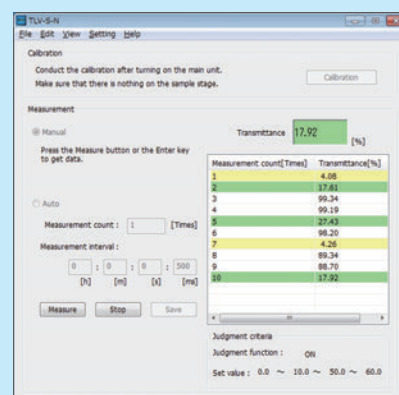
Features

- Built-in photopic filter
- One-touch calibration
- Not affected by ambient light
- Long lamp life
- Remote control software
- Judgment function

Applications

- Transparent conductive film glass
- Film
- Resin material
- Eyeglass lens
- Glass blank
- Filter glass

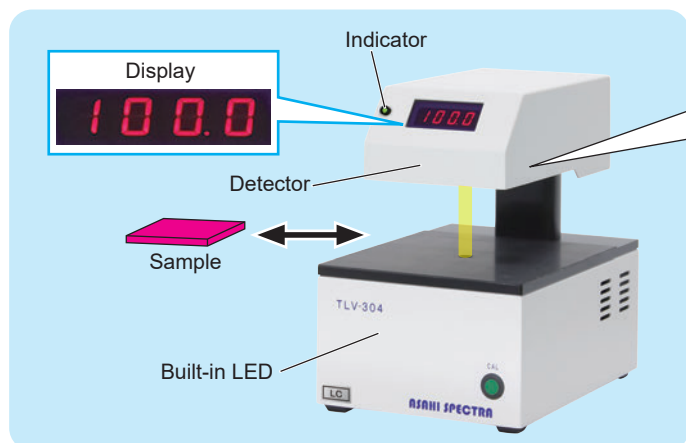
Software



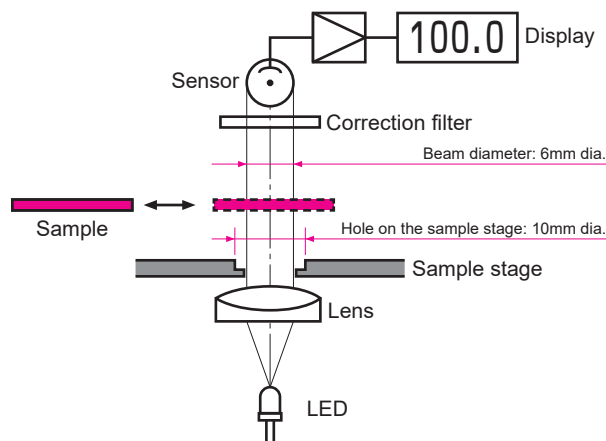
- Setting of measurement conditions
- List of measurement results
- Setting of judgment criteria

Product Outline

The TLV-304-LC is a compact transmittance meter with a correction filter which approximates to the luminosity curve. This unit quickly measures the transmittance with a value close to sensitivity of human eyes and allows easy measurement by placing a sample after one-touch calibration. It is suitable for a quick inspection process to conduct large volume of measurements.



Optical Configuration



It is calibrated as 100% without a sample on the stage. After placing a sample, it displays the actual transmittance.

Not Affected by Ambient Light

Stable measurement is achieved by separating a measurement light from an ambient light with pulse operation of the white LED.

RS485 Remote Control

It is possible to calibrate and get the transmission data by PC via RS485.

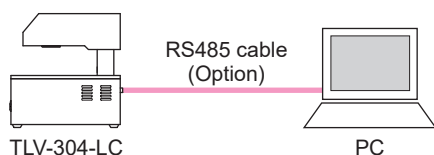
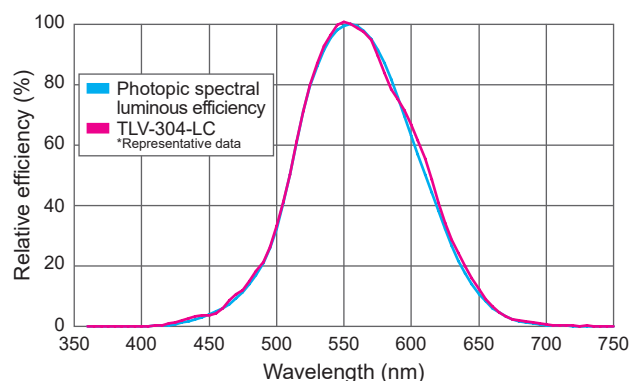


Photo Sensitivity



Options

- RS485 cable for software

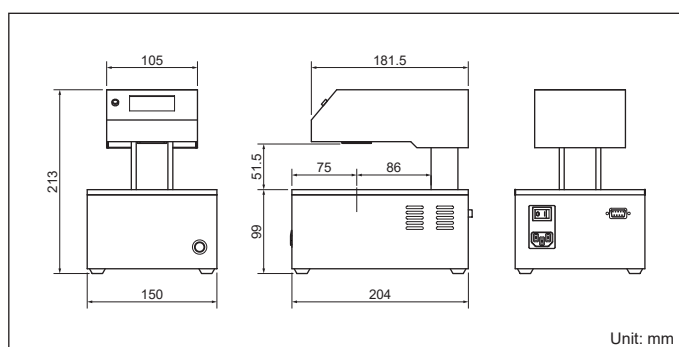
General Specifications

Model: TLV-304-LC
 Photo sensitivity: Approximation of photopic spectral luminous efficiency
 Light source: White LED
 Display: 4 digits digital display (xxx.x) Unit: %
 Measurement reproducibility: Within $\pm 0.5\%$
 Measurement time: 200ms
 Distance between detector and light source: Approximately 50mm
 Beam diameter: 6mm dia.
 Sample size: Min. 15mm dia.
 Judgment function: Green indicator (On, Off or Blink)
 Input voltage: AC100 - 240V 50/60Hz (Input range: AC85 - 264V)
 Apparent power: Less than 7VA (AC100V/50Hz)
 Remote control: RS-485 *The cable is optional.
 Recommended environment: Temperature 10 - 35 deg C : Humidity less than 70% *Avoid condensation
 Dimensions: 150(W) x 204(D) x 213(H)mm
 Weight: 2.9kg

Scope of Delivery

- TLV-304-LC main unit
- Filter holder
- Filter fitting tool
- AC cable (3m)
- Instruction manual
- Software *Download

Dimensions



Contact us for customization, such as for UV / IR range and large samples.

*Product specifications are subject to change without notice.

ASAHI SPECTRA

Gardenia Bldg. 4F, 2-13-1 Kamijujo, Kita-ku, Tokyo 114-0034 Japan
 Phone: +81-3-3909-1151 / FAX: +81-3-3909-1152
 E-mail: info@asahi-spectra.com

www.asahi-spectra.com