

Transmittance Meter TLV-305-BP

**Quick check of transmittance with
specific wavelength by a bandpass filter**



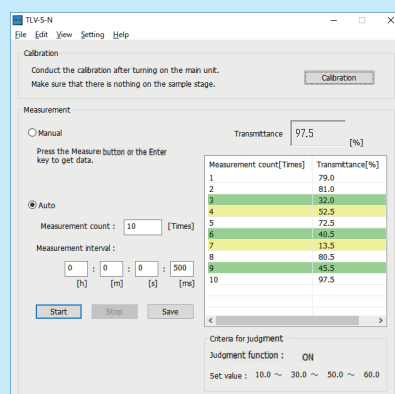
Features

- Quick measurement of transmittance
- Selectable wavelength by bandpass filter *Option
- Less effect of ambient light
- Compact and space-saving design
- Judgment function
- Maintenance-free long life LED lamp
- Remote control software

Measurable Sample

- Transparent conductive film glass
- Film
- Glass blank
- Resin material
- Filter glass

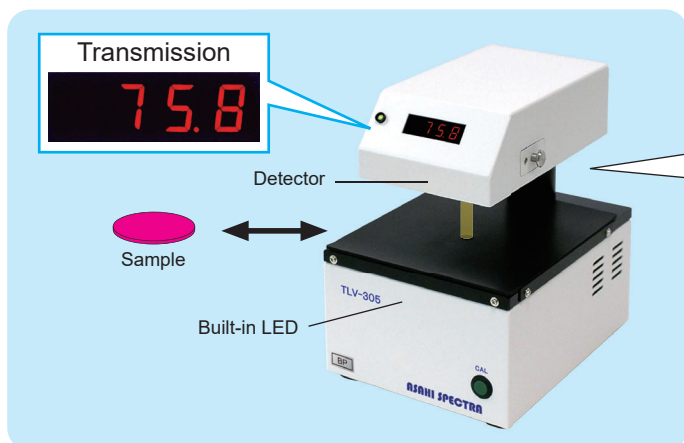
**Remote control is available through
our proprietary software**



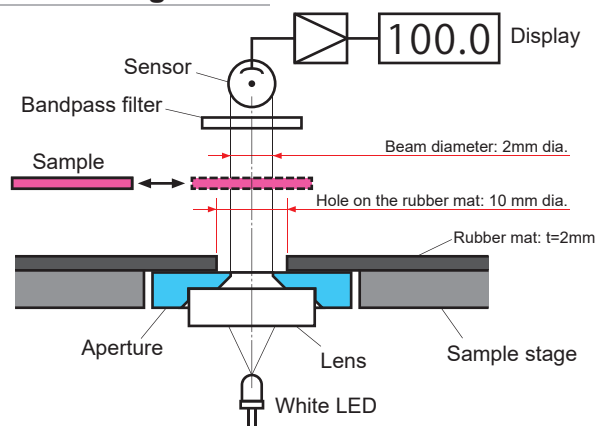
- Operating by your PC

Product Outline

The TLV-305-BP is a compact transmittance meter. This unit quickly measures the transmittance with specific wavelength by a bandpass filter. It allows easy measurement by placing a sample after one-touch calibration. It is suitable for a quick inspection process to conduct large volume of measurements.



Optical Configuration



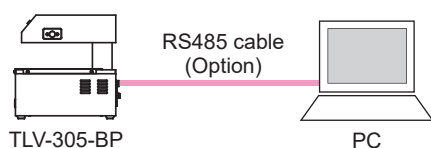
It is calibrated as 100% without a sample on the stage. After placing a sample, it displays the actual transmittance.

Less effect of ambient light

Stable measurement is achieved by separating a measurement light from an ambient light with pulse operation of the white LED.

RS485 Remote Control

It is possible to calibrate and get the transmission data by PC via RS485.



Options

- Bandpass filter
Specific measurement wavelength is selectable by a bandpass filter.

CWL: 440-730nm / FWHM: 10nm / Size: 25mm dia.



- Additional filter holder

The additional filter holder makes it easier to exchange bandpass filters.



- RS-485 cable for software

General Specifications

- Model: TLV-305-BP
- Output wavelength: 440 - 730nm * Specified by a filter
- Spectroscopy device: Bandpass filter 25mm dia.
- Light source: White LED
- Display: 4 digit digital display (xxx.x) %
- Measurement accuracy: Within $\pm 2\%$ *1
- Measurement reproducibility: 0.5% or less
- Beam diameter: 2mm dia.
- Judgment function: Green indicator (On, Off or Blink)
- Input voltage: AC100-240V $\pm 10\%$ 50/60Hz
- Apparent power: 7VA or less *In case AC100V input/50Hz
10VA or less *In case AC240V input/50Hz
- Remote control: RS485 *The cable is optional.
- Control method: Built-in buttons or remote control by PC (Dedicated software)
- Software operating environment: Windows 10, Windows 11 (Supported language: Japanese/English)
- Safety mechanism: Built-in fuse Shutdown at AC input overcurrent
*Rating: 0.5A/250VAC, High breaking capacity, Time delay type
5mm dia. x 20mm
- Recommended environment: Temperature 10 - 35 deg C
Humidity less than 70% *Avoid condensation
- Dimensions: 150(W) x 204(D) x 211(H)mm
- Weight: 2.6kg

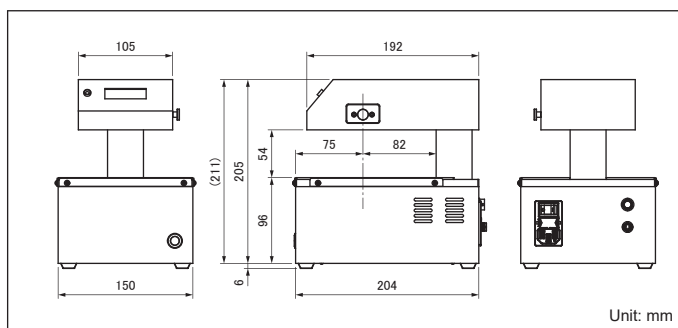
*1 It is calculated by measurement of JQA guaranteed sample, JCRM110, JCRM130 and JCRM150.

Package Contents

- TLV-305-BP main unit
- Filter fitting tool
- AC power cord (3m)
- Instruction manual
- Software *Download

*Bandpass filter is optional.

Dimensions



*Product specifications are subject to change without notice.

ASAHI SPECTRA

Gardenia Bldg. 4F, 2-13-1 Kamijujo, Kita-ku, Tokyo 114-0034 Japan
Phone: +81-3-3909-1151 / FAX: +81-3-3909-1152
Email: info@asahi-spectra.com

www.asahi-spectra.com